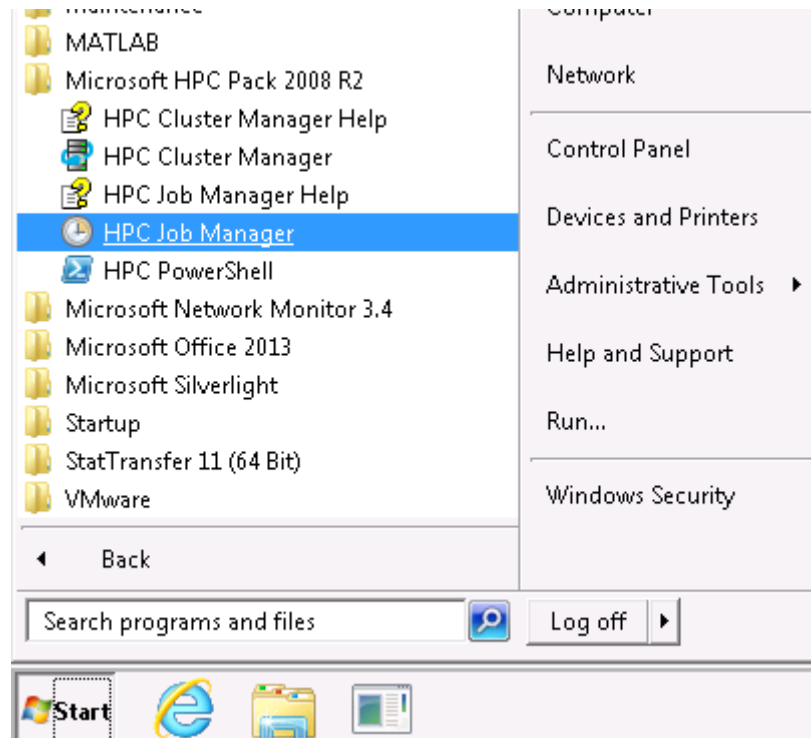
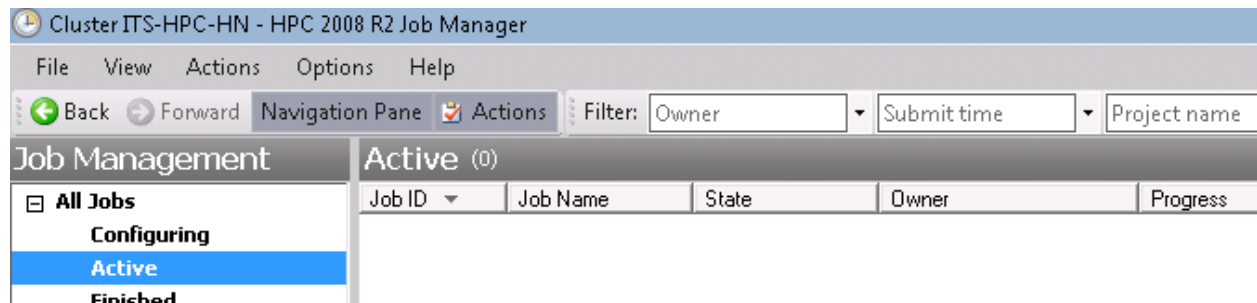


Checking Job Status with HPC Job Manager

Open the Start Menu and browse to All Programs > Microsoft HPC Pack 2008 R2 > HPC Job Manager. Alternatively, open the Start Menu and search for “HPC Job Manager”



Selecting “Active” on the left hand tree will show all Active jobs in the cluster.



You can also select Finished, Failed or Configuring to see jobs in other states. Selecting “All Jobs” will show jobs in all states from all users.

